



Manual



**LED Typhoon PAR Indoor**  
**12x10W RGBWA UV 6in1**  
**Powercon**

---

## Table of contents

1. Safety instructions .....	3
1.1. For safe and efficient operation .....	3
2. Designated use .....	4
2.1. Overhead installation .....	5
3. Introduction .....	7
3.1. Product overview .....	7
3.2. Dimensions .....	8
4. Connections .....	9
4.1. Electrical connections .....	9
4.2. DMX connections .....	9
4.3. DMX connection with terminator .....	9
5. Control .....	10
5.1. Structure of the menu .....	10
6. DMX chart .....	13
6.1. DMX Mode 1(3 channel) .....	13
6.2. DMX mode2 (6 channels) .....	13
6.3. DMX mode 3 (8 channels) .....	13
6.4. Dimmer mode 4 (10 channel) .....	14
6.5. Dimmer mode 5 (13 channels) .....	16
7. Technical data .....	19

## 1. Safety instructions



- This device is suitable for indoor use (not outdoors) only.
- All modifications to the device will void the warranty.
- Repairs are to carry out by skilled personnel only.
- Use only fuses of the same type and original parts as spare parts.
- Protect the unit from rain and humidity to avoid fire and electric shocks.
- Make sure to unplug the power supply before opening the housing.

### 1.1. For safe and efficient operation

#### **Be careful with heat and extreme temperature**

Avoid exposing it to direct rays of the sun or near a heating appliance.  
Not put it in a temperature bellow 32°F /0°C, or exceeding 104°F /40°C.

#### **Keep away from humidity, water and dust**

Do not place the set in a location with high humidity or lots of dust.  
Containers with water should not be placed on the set.

#### **Keep away from sources of hum and noise**

Such as transformer motor, tuner, TV set and amplifier.

#### **To avoid placing on un-stable location**

Select a level and stable location to avoid vibration.

#### **Do not use chemicals or volatile liquids for cleaning**

Use a clean dry cloth to wipe off the dust, or a wet soft cloth for stubborn dirt.

#### **If out of work, contact sales agency immediately**

Any troubles arose, remove the power plug soon, and contact with an engineer for repairing, do not open the cabinet by yourself, it might result a danger of electric shock.

#### **Take care with the power cable**

Never pull the power cable to remove the plug from the receptacle, be sure to hold the plug. When not using the device for an extended period of time, be sure to disconnect the plug from the receptacle.

#### **Important:**

**Damages caused by the disregard of this user manual are not subject to warranty. The dealer will not accept liability for any resulting defects or problems. Make sure the electrical connection is carried out by qualified personnel. All electrical and mechanical connections have to be carried out according to the European safety standards.**

## 2. Designated use

This device was developed for professional use on stages, in discos, theatres etc. The device is only approved for a connection up to 230V 50/60 Hz AC voltage and only for indoor use.

Regular breaks during operation increase the lifetime of your device.

Avoid convulsions or any form of forceful impact during the installation or the start-up of the device.

Make sure that the device is not exposed excessive heat, humidity or dust at the place of installation. Take care that no cables are lying around. You would endanger your own safety and also the safety of a third party.

It is not allowed to operate or store the device in an environment in which spray water, rain, humidity or fog is expected. Humidity or very high atmospheric humidity could reduce the isolation of the device and could cause deathly electric shocks. If you use fog devices the device has not be exposed to a direct smoke jet. There has to be a safety distance of at least 0,5m between this device and the fog machine. Make sure that the saturation of the fog has to enable a visibility of at least 10m.

The ambient temperature has to be between 0°C and +40°C. Avoid direct sunlight and close proximity to heaters. You have also to attend it during the transport in closed motor vehicles.

Operate the device not during thunderstorms. Surge voltages could destroy the device. Unplug the power supply during thunderstorms.

During the installation the use of the mounting bracket is obligatory.

Surrounding objects or surfaces should not be in contact with the device.

Make sure that during the installation and removal of the device the area below the place of installation is basically cordoned off. This also applies to implementation of service.

The device has basically been protected by a suitable safety.

Make familiar yourself with the functions of the device before start-up. People without the experience should not handle with the device. The most cause of functional disorder is inappropriate handling.

Do not use chemicals or volatile liquids for cleaning. Use a clean dry cloth to wipe off the dust, or a wet soft cloth for stubborn dirt.

For transport use the original packing or designated accessory to avoid damages during the transport.

### **For reasons of safety unauthorized changes are forbidden.**

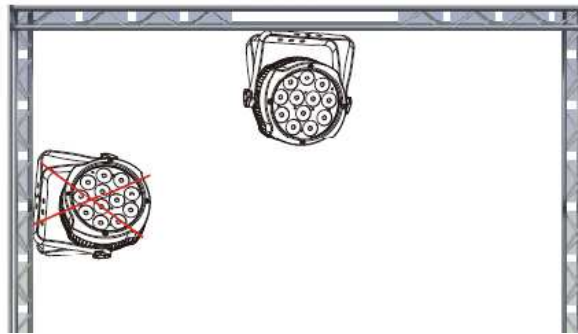
A usage of the device which differs from usages which are described in this manual can cause damages of the device. In that case the warranty expires. Additional you should notice that every differed usage is related with dangers and can cause e.g. an electrical short, fire, electric shock or crash.

## 2.1. Overhead installation



### Danger of life!

You have to observe the regulations of BGV C1 (formerly VBG 70) and EN60598-2-17 Installations are to carry out by skilled personnel only.



The suspension devices have to be build and measured so they can withstand for an hour the tenfold of the payload without suffering a permanent detrimental deformation.

Basically installation has to be made by using a second separate suspension. This can be e.g. a suitable net. The second suspension must be designed and attached so no part of the installation can fall down in case of failure.

During construction, reconstruction and deconstruction unnecessary stay in the range of moving areas, on lightning bridges, under elevated work stations or any other danger zones is forbidden.

The operator is obliged to following safety-related and mechanical facilities:

- Before the first start-up or after critical changes before restarting it has to be checked by an expert.
- Review in the frame of the inspection test at least all four years by an expert. .
- Review by a qualified person at least once a year.

### How to carry out the overhead installation:

In tidal fall you should install the device out of the lounge area of people

**IMPORTANT!** Overhead installation requires a high level of experience. This includes knowledge of calculating the payload, used installation material and safety inspections of the used material and the projector whereas the required experience is not limited to this. Do not try to carry out installation yourself under any circumstances if you are not qualified. Contact a professional installer. An inappropriate installation can lead to injuries and/or damaged properties.

It is not allowed to install the device in the grip area of people.

If the device may hang from the ceiling or from high beams, the use of truss systems is mandatory. The device may not be installed so it can swing freely in the room.

Please note: Crashing down items can cause serious injuries! Do not install the projector, if you doubt the safety of a possible installation form!

Before installation make sure that the mounting surface has the ability to carry the tenfold point load of the own weight of the device.

Mount the device with the mounting-bracket to your trussing system using an appropriate clamp.

During overhead installation the device must be always secured by a safety rope which is designed to hold the twelvefold weight of device. Only safety ropes with quick-release safety fastener elements may be used. Hang up the safety rope in the hole of the mounting bracket. Direct the rope over the truss or an appropriate fastening point. Hang up the end in the fastening element and tie up the locking nut. A safety rope once exposed to failing load or damaged may not be used furthermore.

**The maximum drop exceed must not exceed 20cm.**

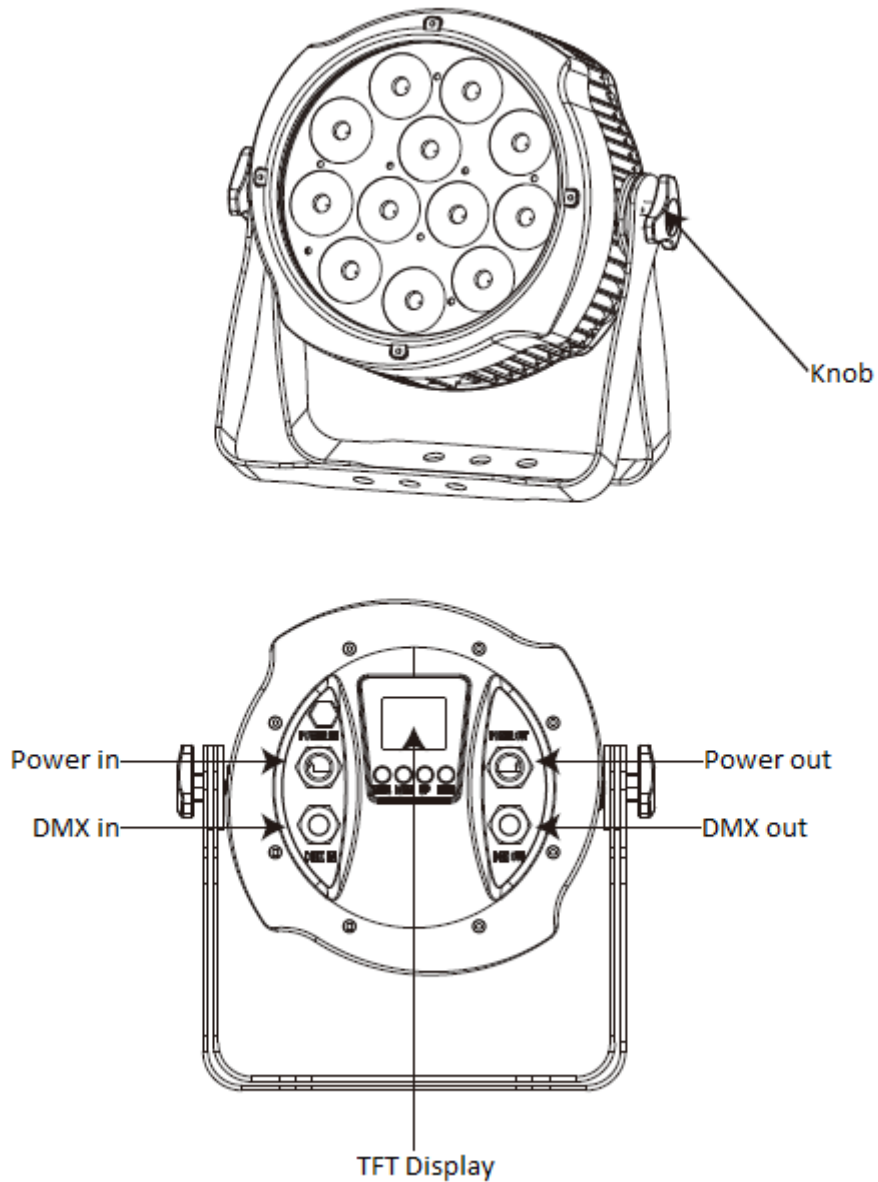
A safety rope once exposed to failing load or damaged may not be used furthermore.  
Adjust the desired inclination angle via the mounting bracket and tighten the screw.

### 3. Introduction

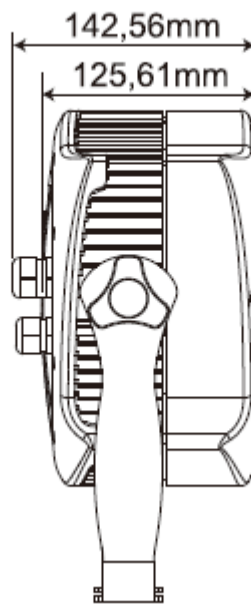
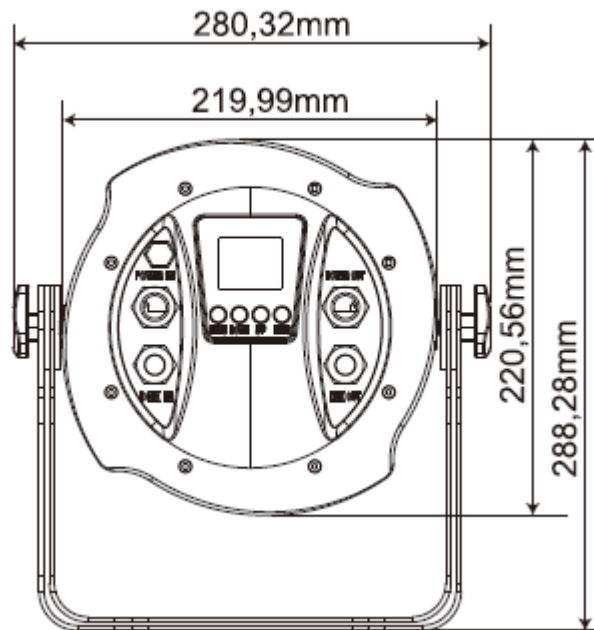
Thank you for buying the **LED Typhoon PAR Indoor 12x10W RGBWA UV 6in1 IP65**. It is a powerful device.

For a successful installation and operation, please read this manual carefully.

#### 3.1. Product overview



**3.2. Dimensions**





## 4. Connections

### 4.1. Electrical connections

If you wish to change the power supply settings, see the chapter Appendix. Connect the fixture to the mains with the enclosed power cable and plug. The earth has to be connected.

Cable (EU)	Cable (US)	Pin	International
Brown	Black	Live	L
Light blue	White	Neutral	N
Yellow/Green	Green	Earth	⊕

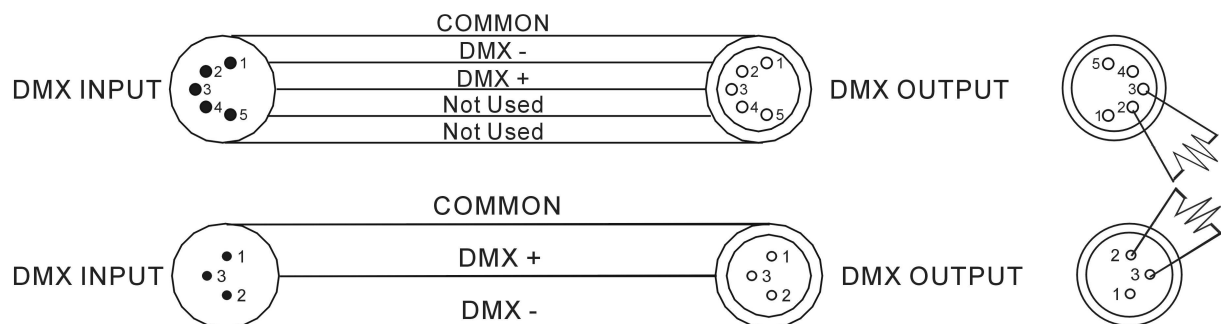
### 4.2. DMX connections

To make a DMX512 connection go ahead like it is described in the picture. Make sure that you use shielded cable. 3pole or 5pole XLR cables are suitable.

Important! After the last device the line has to be terminated. In order to do this you have to solder a 120Ω resistor between the pins Data + and Data -. You can solder this end resistor on a 3pin or 5pin XLR: Plug this adapter into the DMX output of the device.

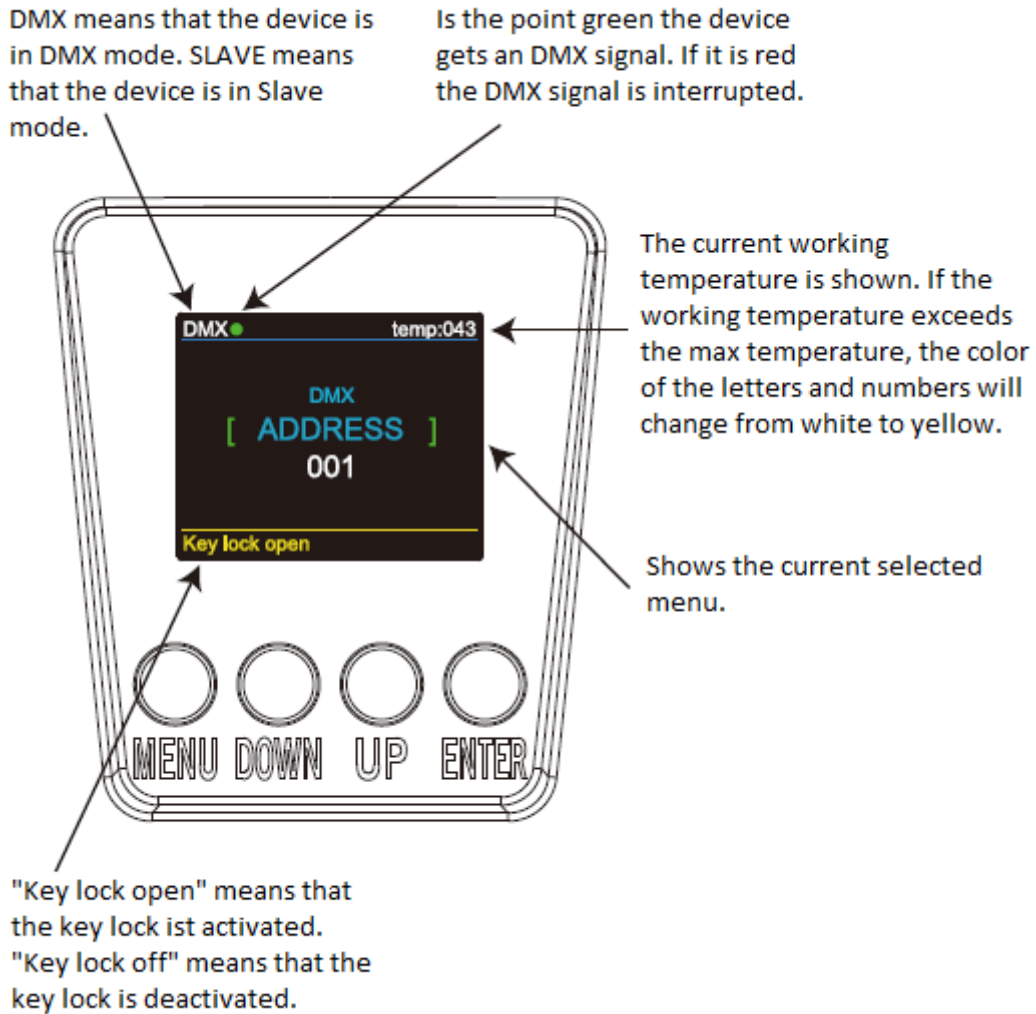
### 4.3. DMX connection with terminator

Where the DMX cable has to run a long distance or the equipment is operated in an electrically noisy environment like a disco for installations, we recommend using a DMX terminator. This prevents corruption of the digital control signal by electrical noise. The DMX terminator is simply an XLR connector with a 120 Ω resistor between pins 2 and 3, which is then plugged into the XLR output socket of the last device in the series. Please look to the bottom drawings.



## 5. Control

Press MENU, to get into the menu. With UP/DOWN you can choose the required point of menu. Confirm with ENTER. With UP/DOWN you can make the required settings or choose another submenu. Confirm with ENTER. By pressing MENU you can step back to the main menu.



### 5.1. Structure of the menu

Menu	Submenu 1	Submenu 2	Submenu 3	Submenu 4	Function
DMX	CHANNE L 03				Choosing one DMX mode.
	CHANNE L 06				
	CHANNE L 08				
	CHANNE L 10				
	CHANNE L 13				
	ADDRES S 001 –				Setting the DMX address.

	ADREDD 512				
RUN MODE	DMX				Activates the DMX mode.
	SLAVE				Activates the Slave mode.
SETUP	ID Number	OFF			Deactivates the ID Number.
		1 – 66			Setting the ID number.
	Display LED	ON / OFF			If you choose OFF the display shuts down, if the device was not operated for 10s.
	Key locks	ON / OFF			If this function is activated the key lock is active. To unlock the keys press DOWN + UP + DOWN + UP.
	Max temp	002 – 120			Setting the max working temperature. If the device exceeds the max working temperature the letters and numbers in the display change their color from white to yellow.
	Dimmer RED	000 – 255			Dimmer red 0 – 100%
	Dimmer GREEN	000 – 255			Dimmer green 0 – 100%
	Dimmer BLUE	000 – 255			Dimmer blue 0 – 100%
	Dimmer WHITE	000 – 255			Dimmer white 0 – 100%
	Dimmer AMB	000 – 255			Dimmer amber 0 – 100%
	Dimmer UV	000 – 255			Dimmer UV 0 – 100%
Dimmer ALL	000 – 255			Dimmer 0 – 100%	
INFORM ATION	Software V.xxx				Shows the current software version.
	Hardware H.xxx				Shows the current hardware version.
	Fix times xxxxxh xxm				Shows the current operating hours of the device.
AUTO	SPEED	00 – 31			Setting the speed for programs slow – fast
	AUTO MODE	01 – 21			Choosing one automatic program.
CUSTOM ER	CUSTOM MODE 01 – CUSTOM				Here you can choose one of 11 customer automatic programs. These automatic programs you can set in the

	MODE 11				menu EDIT.
CAL WHITE	WHITE 1 – WHITE 11	RED	000 – 255		Here you can set 11 customer whites.
		GREEN	000 – 255		
		BLUE	000 – 255		
		WHITE	000 – 255		
		AMB	000 – 255		
		UV	000 – 255		
STAT COLOR	STAT RED	000 – 255			Dimmer red 0 – 100%
	STAT GREEN	000 – 255			Dimmer green 0 – 100%
	STAT BLUE	000 – 255			Dimmer blue 0 – 100%
	STAT WHITE	000 – 255			Dimmer white 0 – 100%
	STAT AMB	000 – 255			Dimmer amber 0 – 100%
	STAT UV	000 – 255			Dimmer UV 0 – 100%
	SELECT COLOR	01 – 70			Here you can choose one of 70 preset colors. .
	STAT STROB	00 -31			Speed for strobe slow - fast
EDIT	PRO1 – PRO11	SC01 – SC32	RED	000 – 255	Here you can set 11 customer automatic programs. For every program you can set up to 32 scenes. You can call these programs with the point of menu CUSTOMER or via DMX in DMX mode 5 (13 channels).
			GREEN	000 – 255	
			BLUE	000 – 255	
			WHITE	000 – 255	
			AMB	000 – 255	
			UV	000 – 255	
			FADE	00 – 31	
			FLASH	00 – 50	
			STRO	00 – 31	
			TIME	00 – 100	
UPLOAD					Connect several devices. Set one as master and the others as slave. Choose as master this device which has stored the customers programs which you want also to save on the other devices. Press ENTER and UO/DOWN until you can read out “UPLOAD” and confirm with ENTER. The customer programs will be saved on the slave devices.
RESET					Reset.

## 6. DMX chart

### 6.1. DMX Mode 1(3 channel)

Channel	Value from	Value to	Function
1	0	255	Hue
2	0	255	Saturation
3	0	255	Dimmer 0 – 100%

### 6.2. DMX mode2 (6 channels)

Channel	Value from	Value to	Function
1	0	255	Dimmer red 0 – 100%
2	0	255	Dimmer green 0 – 100%
3	0	255	Dimmer blue 0 – 100%
4	0	255	Dimmer white 0 – 100%
5	0	255	Dimmer amber 0 – 100 %
6	0	255	Dimmer UV 0 – 100%

### 6.3. DMX mode 3 (8 channels)

Channel	Value from	Value to	Function
1	0	255	Dimmer 0 – 100%
2	0	255	Dimmer red 0 – 100 %
3	0	255	Dimmer green 0 – 100%
4	0	255	Dimmer blue 0 – 100%
5	0	255	Dimmer white 0 – 100%
6	0	255	Dimmer amber 0 – 100 %
7	0	255	Dimmer UV 0 – 100%
8	0	49	No function
	50	99	Dimmer 1
	100	149	Dimmer 2
	150	199	Dimmer 3
	200	255	Dimmer 4

#### 6.4. Dimmer mode 4 (10 channel)

Channel	Value from	Value to	Function
1	0	255	Dimmer 0 – 100%
2	0	255	Dimmer red 0 – 100 %
3	0	255	Dimmer green 0 – 100%
4	0	255	Dimmer blue 0 – 100%
5	0	255	Dimmer white 0 – 100%
6	0	255	Dimmer amber 0 – 100 %
7	0	255	Dimmer UV 0 – 100%
8	0	19	No function
	20	23	Red
	24	27	Green
	28	31	Blue
	32	35	Yellow
	36	39	Cyan
	40	43	Magenta
	44	47	White
	48	51	Orange
	52	55	Pink
	56	59	Violet
	60	63	Aquamarine
	64	67	Sky blue
	68	71	Full white
	72	75	Cool white
	76	79	Warm White
	80	83	White 3200
	84	87	White 2500
	88	91	Yellow 2
	92	95	Straw
	96	99	Orange 2
	100	103	Light rose
	104	107	Dark pink
	108	111	Magenta 2
	112	115	Blue 2
	116	119	Med blue green
	120	123	Dark blue
	124	127	Bright pink
	128	131	Medium blue
	132	135	Golden amber
136	139	Deep golden amber	
140	143	Pale lavender	
144	147	Apricot	
148	151	Dark lavender	
152	155	Chocolate	
156	159	Just blue	

---

	160	163	Surprise pink
	164	167	Scarlet
	168	171	Surprise peach
	172	175	Fire
	176	179	English rose
	180	183	Mauve
	184	187	Bright blue
	188	191	Alice blue
	192	195	Rose indigo
	196	199	Urban blue
	200	203	Cool blue
	204	207	Light salmon
	208	211	Mayan Sun
	212	215	Cherry rose
	216	219	Flesh pink
	220	223	Skelton exotic sangria
	224	255	Amber
9	0	255	36 different color macros
10	0	255	Strobe slow - fast

## 6.5. Dimmer mode 5 (13 channels)

Channel	Value from	Value to	Function
1	0	255	Dimmer 0 – 100%
2	0	255	Dimmer red 0 – 100 %
3	0	255	Dimmer green 0 – 100%
4	0	255	Dimmer blue 0 – 100%
5	0	255	Dimmer white 0 – 100%
6	0	255	Dimmer amber 0 – 100 %
7	0	255	Dimmer UV 0 – 100%
8	0	10	No function
	11	20	R100% / G upwards / B0% / W0%
	21	30	R downwards / G100% / B0% / W0%
	31	40	R0% / G100% / B upwards / W0%
	41	50	R upwards / G downwards / B100% / W0%
	51	60	R upwards / G0% / B100% / W0%
	61	70	R100% / G0% / B downwards / W0%
	71	80	R100% / G0% / B0% / W upwards
	81	90	R100% / G0% / B0% / W downwards
	91	100	R upwards / G downwards / B0% / W0% → R downwards / G upwards / B0% / W0%
	101	110	R upwards / G0% / B downwards / W0% → R downwards / G0% / B upwards / W0%
	111	120	R0% / G upwards / B downwards / W0% → R0% / G upwards / B downwards / W0%
	121	130	R upwards / G upwards / B downwards / W0% → R downwards / G downwards / B upwards / W0%
	131	140	R upwards / G downwards / B downwards / W0% → R downwards / G upwards / B upwards / W0%
	141	150	R upwards / G downwards / B upwards / W0% → R downwards / G upwards / B downwards / W0%
	151	160	R upwards / G0% / B downwards / W0% → R downwards / G upwards / B0% / W0% → R0% / G downwards / B upwards / W0%
	161	170	R upwards / G100% / B downwards / W0% → R100% / G downwards / B upwards / W0% → R downwards / G upwards / B100% / W0% → R downwards / G upwards / B0% / W0% → R0% / G downwards / B upwards / W0% → R 0% / G 0% / B downwards / W upwards
	171	180	R upwards / G0% / B0% / W0% → R0% / G100% / B downwards / W0% → R upwards / G100% / B0% / w0%
	181	190	R100% / G downwards / B0% / W0% → R100% / G0% / B upwards / W0% → R downwards / G0% / B100% W0% → R0% / G upwards / B100% / W0%
191	200	RGBW	



	201	205	White 1					
	206	210	White 2					
	211	215	White 3					
	216	220	White 4					
	221	225	White 5					
	226	230	White 6					
	231	235	White 7					
	236	240	White 8					
	241	245	White 9					
	246	250	White 10					
	251	255	White 11					
9			If channel 8 is activated					
	0	255	Setting the speed for channel 8.					
			If channel 8 is not activated					
	0	15	No function					
	16	255	Strobe slow – fast					
10	0	8	No function					
	9	10	Automatic program 1					
	11	20	Automatic program 2					
	21	30	Automatic program 3					
	31	40	Automatic program 4					
	41	50	Automatic program 5					
	51	60	Automatic program 6					
	61	70	Automatic program 7					
	71	80	Automatic program 8					
	81	90	Automatic program 9					
	91	100	Customer program 1					
	101	110	Customer program 2					
	111	120	Customer program 3					
	121	130	Customer program 4					
	131	140	Customer program 5					
	141	150	Customer program 6					
	151	160	Customer program 7					
	161	170	Customer program 8					
	171	180	Customer program 9					
181	190	Customer program 10						
191	255	Customer program 11						
11	0	255	Setting the speed for channel 10					
12	0	49	No function					
	50	99	Dimmer 1					
	100	149	Dimmer 2					
	150	199	Dimmer 3					
	200	255	Dimmer 4					
13	0 – 9	All IDs	170 – 179	ID 17	223	ID 34	240	ID51
	10 – 19	ID 1	180 –	ID 18	224	ID 35	241	ID52

			189					
20 – 29	ID 2	190 – 199	ID 19	225	ID 36	242	ID 53	
30 – 39	ID 3	200 – 209	ID 20	226	ID 37	243	ID 54	
40 – 49	ID 4	210	ID 21	227	ID 38	244	ID 55	
50 – 59	ID 5	211	ID 22	228	ID 39	245	ID 56	
60 – 69	ID 6	212	ID 23	229	ID 40	246	ID 57	
70 – 79	ID 7	213	ID 24	228	ID 41	247	ID 58	
80 – 89	ID 8	214	ID 25	229	ID 42	248	ID 59	
90 – 99	ID 9	215	ID 26	230	ID 43	249	ID 60	
100 – 109	ID 10	216	ID 27	231	ID 44	250	ID 61	
110 – 119	ID 11	217	ID 28	232	ID 45	251	ID 62	
120 – 129	ID 12	218	ID 29	233	ID 46	252	ID 63	
130 – 139	ID 13	219	ID 30	234	ID 47	253	ID 64	
140 – 149	ID 14	220	ID 31	235	ID 48	254	ID 65	
150 – 159	ID 15	221	ID 32	236	ID 49	255	ID 66	
160 – 169	ID 16	222	ID 33	237	ID 50			

## 7. Technical data

<b>Power supply</b>	
Voltage	110 – 250 V / 50-60 Hz
Power consumption max.	120 W
<b>Light source</b>	
LM type	LED 6in1
Color spectrum	RGBWAUV
Power	120 W
Number / Power	12 x 10 W
<b>Connections</b>	
Strom in	P-Con
Strom out	P-Con
XLR in/out	3pol
<b>Controlling</b>	
Sound-to-Light	Yes
Automatic	Yes
Master-Slave	Yes
DMX512	Yes
Number of channels	3 / 6 / 10 / 13 channel
<b>Hardware</b>	
Protection class	IP20
Suitability	Indoor
Dimensions (L/B/H)	288 x 280 x 142 mm
Weight	4,65 kg

**Importer:**

**B & K Braun GmbH**  
**Industriestraße 2**  
**D-76307 Karlsbad**  
[www.bkbraun.com](http://www.bkbraun.com)  
[info@bkbraun.com](mailto:info@bkbraun.com)

